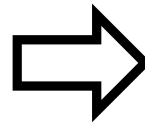
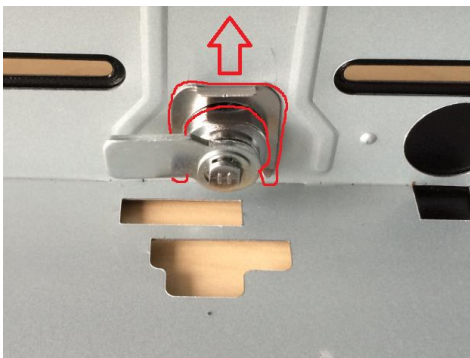


ACROPAQ Cash Drawer lock replacement procedure

1. Pull out the inner tray from the cash drawer
2. Remove the tab on the back of the lock. The arrow in the picture below shows where the top of the tab is. Use a pliers to pull the tab up and out of the lock housing. The tab is normally firmly in place so be prepared to put some effort into pulling it out.



3. With the tab removed as shown in the picture below you can now remove the old lock and insert the new one. Push the tab back into place making sure that the tab seats up against the lock in the grooves on the sides of the lock housing.

